

# Section 2.2

---



## Safety - Operator's Decals and Machine Safety Features

Operator's Cab Safety Decals .....	2.2.2
Safety Features .....	2.2.3
Operator's Cab Safety Features.....	2.2.4
Access to Operator's Cab .....	2.2.5
Access for Service .....	2.2.5

# **NOTICE**

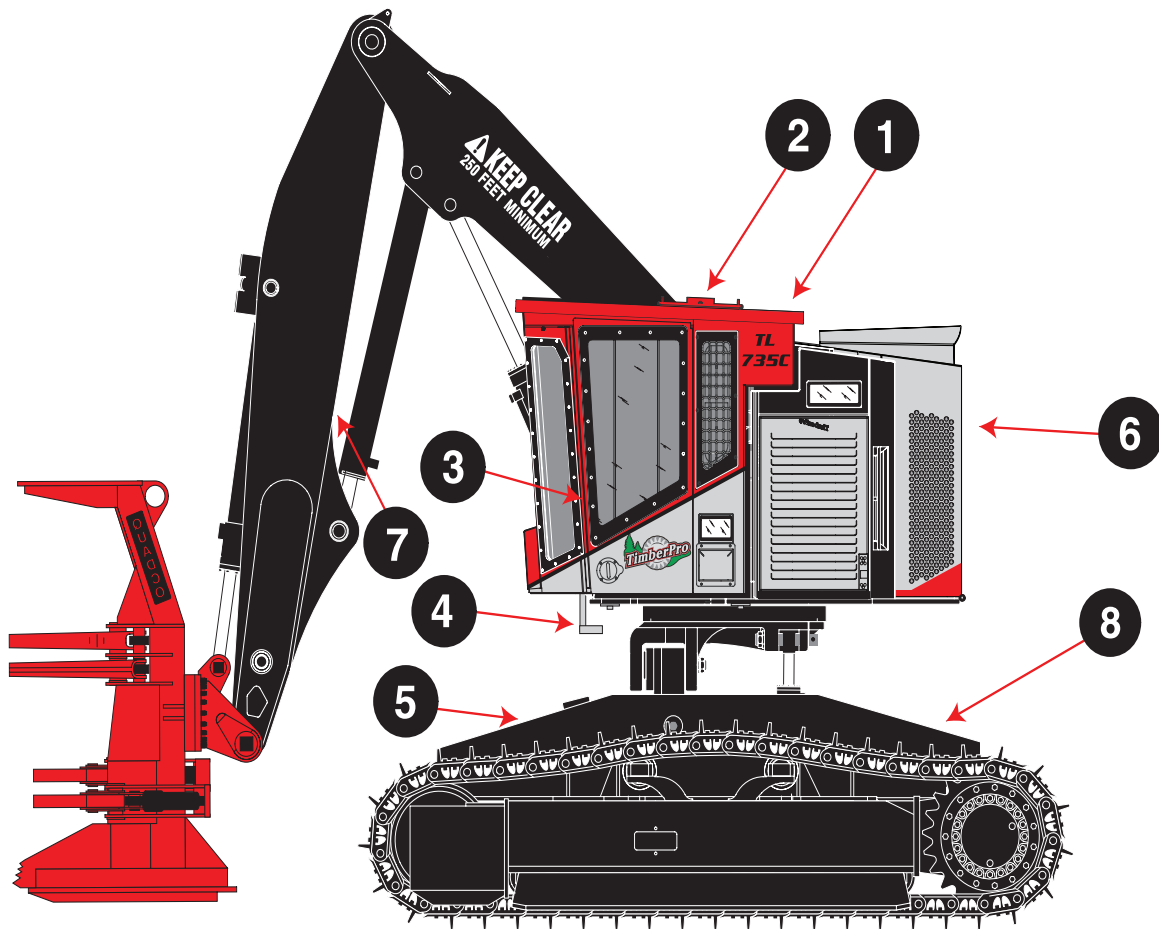
**FOR SAFETY, PRACTICE THE FOLLOWING SAFETY MEASURES.**

## **General Safety Rules**

1. To operate this piece of machinery YOU MUST BE TRAINED AND QUALIFIED.
2. Study the operator's manual and check your company's regulations and safety procedures.
3. Get to know capabilities and limitations of equipment and correct operating procedures.
4. Operate equipment only when you feel physically fit and not under the influence of alcohol or drugs.
5. Keep a serviceable first aid kit in good order on the vehicle.
6. Maintain a charged fire extinguisher on the vehicle AND KNOW HOW TO USE IT.
7. Do not remove mufflers, spark arrestors, protection guards.
8. Clean out debris from high heat areas, such as engine compartment, on at least a daily basis and always after quitting operations for the day.
9. Keep floor, steps and running boards clean and free of oil, ice, mud and loose objects.
10. Inspect equipment daily for signs of failure or beginning of failure.
11. When fueling, servicing or repairing, set booms on the ground and shut down engine.
12. Controls should not be changed without written consent from the factory.

## **OPERATING SAFETY MEASURES**

1. Check all controls and functions for correct response before beginning work cycle with equipment.
2. Use seat belt at all times when operating the machine.
3. Operate all controls from the operator's station only.
4. Whenever leaving the operator's seat, stop the engine. Set booms on the ground so they are not supported by the hydraulics.
5. Be very careful when operating on slopes. Whenever possible, travel straight up or down to minimize possibility of rollover.
6. Be aware of people around the equipment at all times. When engine is running, maintain a safe operating distance between the equipment and other personnel and follow the approved signaling practices.
7. Use recommended protective clothing and devices such as gloves, safety boots, safety hats, goggles and ear protection when necessary.
8. Carry no passengers.



## Safety Features

**1. ROPS/OPS/FOPS** - Fully enclosed operators cabin to protect operator from machine rollover and falling debris.

**2. Secondary Exit** - The roof exit provides an emergency evacuation route for the operator and can be opened from either inside the operators cabin or outside as well. See page 2.2.5 for more information.

**3. Arming / Door Safety System** to prevent any hydraulics from being activated unless an operator is in the cab with the door closed.

**4. Steps** - Operator steps provide a place for the operator to enter and exit the operators cabin.

**5. Operators Platform** - The operators platform provides a place for the operator to stand when entering or exiting the cab or servicing the machine.

**6. Gullwing Door** - The rear engine gullwing door provides a place for the operator or mechanic to stand when servicing the machine. When in the “open” position.

**7. Central Grease Bulkhead** - Grease points for the booms are located in a central location to make greasing the machine easier and safer.

**8. 30lbs (water) Fire Extinguisher** or (Optional) Fire Suppression System.

# Operator's Cab Safety Features

The TimberPro operator's cab is one of the strongest cabs in the industry. TimberPro has a great concern for operator safety. TimberPro cabs are destructive tested to ensure they meet or exceed the guidelines set forth for safe operation.

TimberPro cabs are certified for ROPS, OPS, & FOPS by the governing boards of SAE (Society of Automotive Engineers) and WCB (Canadian Workers Compensation Board).

ROPS - Roll Over Protection System

OPS - Operator Protection System

FOPS - Falling Object Protection System

# Three Cab Escape Routes

Three escape routes from the cab are provided. See Figure 1. These escape routes are as follows:

- 1) Cab door** - This is the normal exit.
- 2) Roof Escape Hatch** - The Roof Hatch can be removed by loosening the star knob located inside the operators cab or from the outside on the top of the hatch. In case the star knobs become stuck. There is a star knob removal available. (see figure 2)
- 3) Front Window Hatch** - The Front Window Hatch can be removed by loosening the star knob located inside the operators cab. In case the star knobs become stuck. There is a star knob removal tool available. (see figure 2)

The roof hatch and front window exits require a check for proper operation at least once a week. (Please see the machine maintenance section of this manual) In addition, the operator should be sure the interior and exterior star knobs are not too tight and that he/she is able to remove them prior to beginning every work shift.

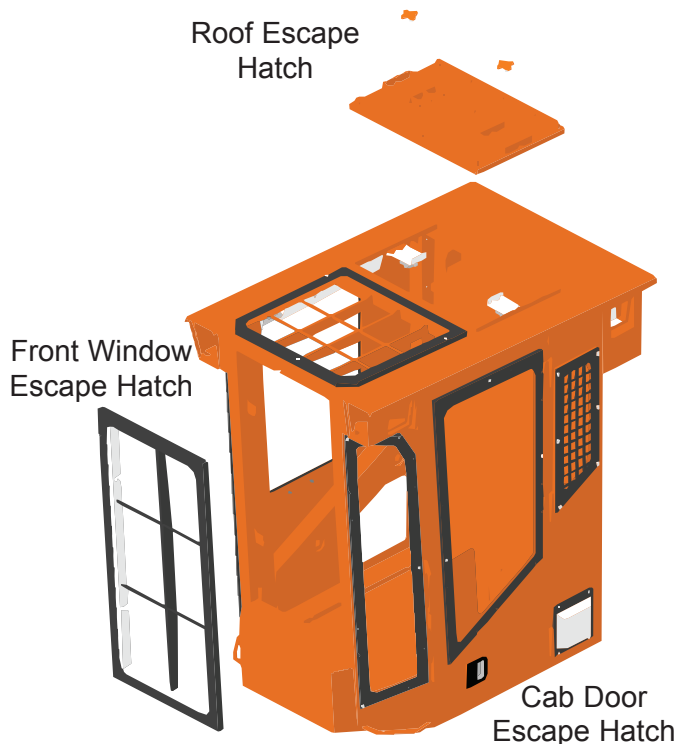


Figure 1

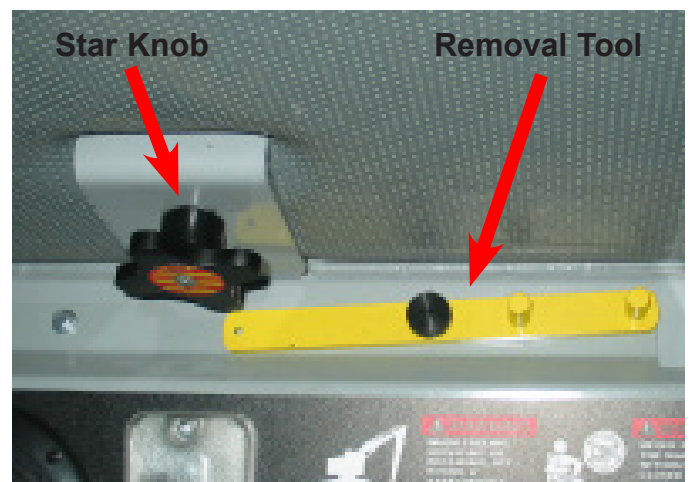


Figure 2 - Star Knob Removal Tool



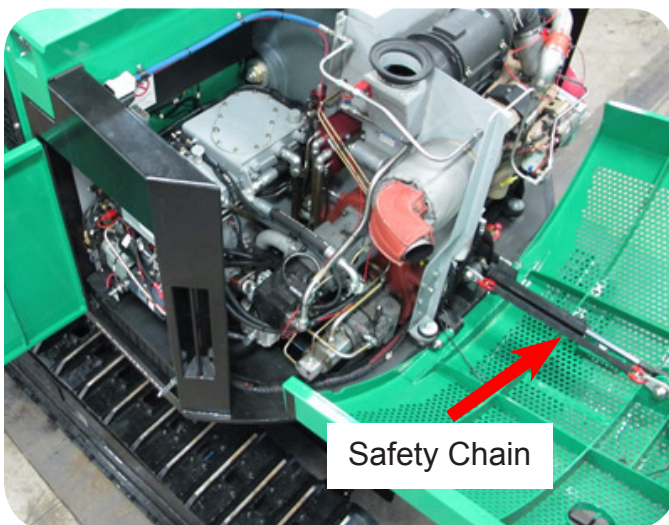
## Access to Operator's Cab



Using the hand rails and retractable cab step access the cab using three points of contact with the machine at all times. Once inside the cab retract the cab step before operation.

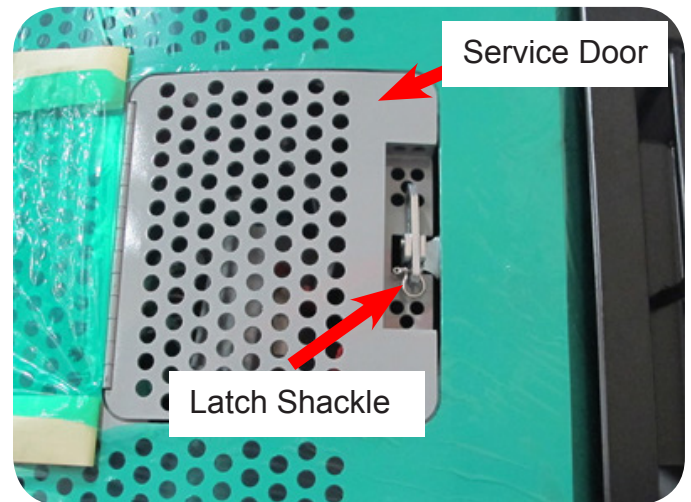
## Access for Service

The TimberPro machine is equipped with a gull wing engine surround that provides a work platform when folded into the open positions. The gull wing engine surround is opened using a push button switch located in the cab. Make sure the safety chain is connected and is not damaged before stepping into the gull wing work platform.



Safety Chain

The gull wing platform is limited to 500 lbs. (227 kg) of weight, so limit the amount of people in the gull wing compartment at one time. The gull wing is equipped with a service door to access the oil dip stick and gull wing lift pump without having to open the complete gull wing surround. Make sure the small service door latch is locked and provided Shackle is in place before opening the gull wing. If the service door latch is not locked, the service door could open if stepped on resulting in injury to the operator or mechanic. Note: the service door becomes part of the floor when the gull wing is open.



Service Door

Latch Shackle

To gain access to the gull wing use the provided handles and climb onto the gullwing work platform making sure you keep three point of contact with the machine at all times.



## Access for Service

### Front Door



The front door safely accessed by using the retractable step. The step is held up into place with a single bolt. Remove the retaining bolt using a 3/4" wrench and the step will slide down into position and is then ready to use. Make sure you keep three point of contact with the machine at all times when using the front step.