

# TimberPro - Long History in Forest Industry



*The Wheels Of Change...*



# TimberPro Family of Tacked Feller Bunchers



**T** - Track Machine  
**L** - Non-Leveling or Leveling  
**7** - Model Creation Date (2007)  
**35** - Undercarriage Size



**T** - Track Machine  
**N** - Non-Leveling or Leveling  
**7** - Model Creation Date (2007)  
**25** - Undercarriage Size



Non Leveling Machines  
TN725B

Leveling Machines  
TL725B  
TL735B

*The Wheels Of Change...*



# TN725B – Non Leveling Tracked Feller Buncher

**Offer Two sizes of TN725B Machines:**

**Lake States Model:**

Narrow Carbody: 9' – 5"

Short Track: 14' - 4"

Weight: 49,400 lbs

**Eastern US/Canada Model:**

Wide Carbody: 10' – 4"

Long Track: 15' – 6"

Weight: 52,200 lbs



*The Wheels Of Change...*



# TL725B – Leveling Tracked Feller Buncher

## TL725B Machines:

Leveling Carbody: 10' – 4" Wide  
Short Track: 15' – 6" Length  
Weight: 55,250 lbs



*The Wheels Of Change...*

# TL725B – Leveling Tracked Feller Buncher

## TL735B Machines:

Leveling Carbody: 10' – 4" Wide

Standard Track 15' – 4" Length

Weight: 59,680 lbs

## TL735B Euro Track Machine:

Leveling Carbody: 9' – 8" (2.98 meters)

Standard Track 15' – 4"

Weight: 61,200 lbs



*The Wheels Of Change...*

# Caterpillar Track Drive Systems

## 725 - Model

D6 – 8" Pitch Track Chain

Short Track – 7 roller

Long Track – 8 rollers

Tractive Effort – 68,629 lbs (1.38 tractive effort/weight ratio) TN  
(1.24 tractive effort/weight ratio) TL

Proven L&S Drives (GFT 60)

## 735 – Model

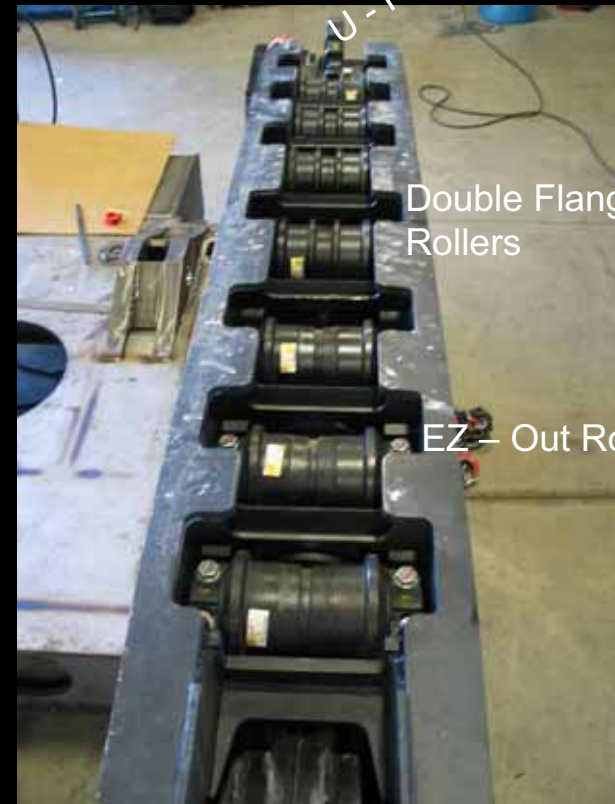
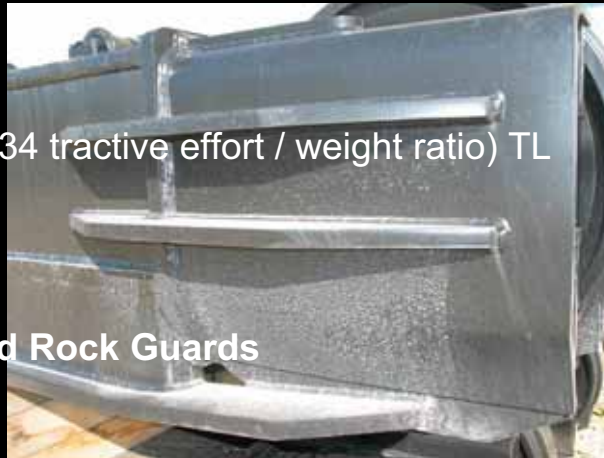
D7 – 8 ½" Pitch Track Chain

7 Rollers

Tractive Effort – 80,066 lbs (1.34 tractive effort / weight ratio) TL

Proven L&S Drives (GFT80)

Extended Rock Guards



U – Port Flushing

Double Flanged Rollers

EZ – Out Rollers

*The Wheels Of Change...*

# Simplified Leveling System

Better Access to Rotary Manifold / Components

Taper Pin Design

Increased Pin Sizes

Larger Spherical Rod Eye Bushing Cylinder  
(20% more capacity)

Increased Lever Arm (24" vs 31.5") 30 %  
Advantage



*The Wheels Of Change...*

# Front Leveling – 28 degrees



*The Wheels Of Change...*



# Rear Leveling – 7 degrees



*The Wheels Of Change...*



# Side Leveling – 24 degrees



*The Wheels Of Change...*



# Leveling Lower Carbody Frame

Support Gussets Extend Across both Tracks

Box Section Design

Fuel Tank and Trunk are Add On

Same Lower Car Body for Track Groups

Large Man Hole w/ Pivoting Cover

Built in Oil Reserve Reservoir

Totally Machined Track Mounting Pads

Fuel Tank Level Sensor

Two Tone Paint



*The Wheels Of Change...*



# Non - Leveling Lower Car Body Frame

1.5" Mounting Tube

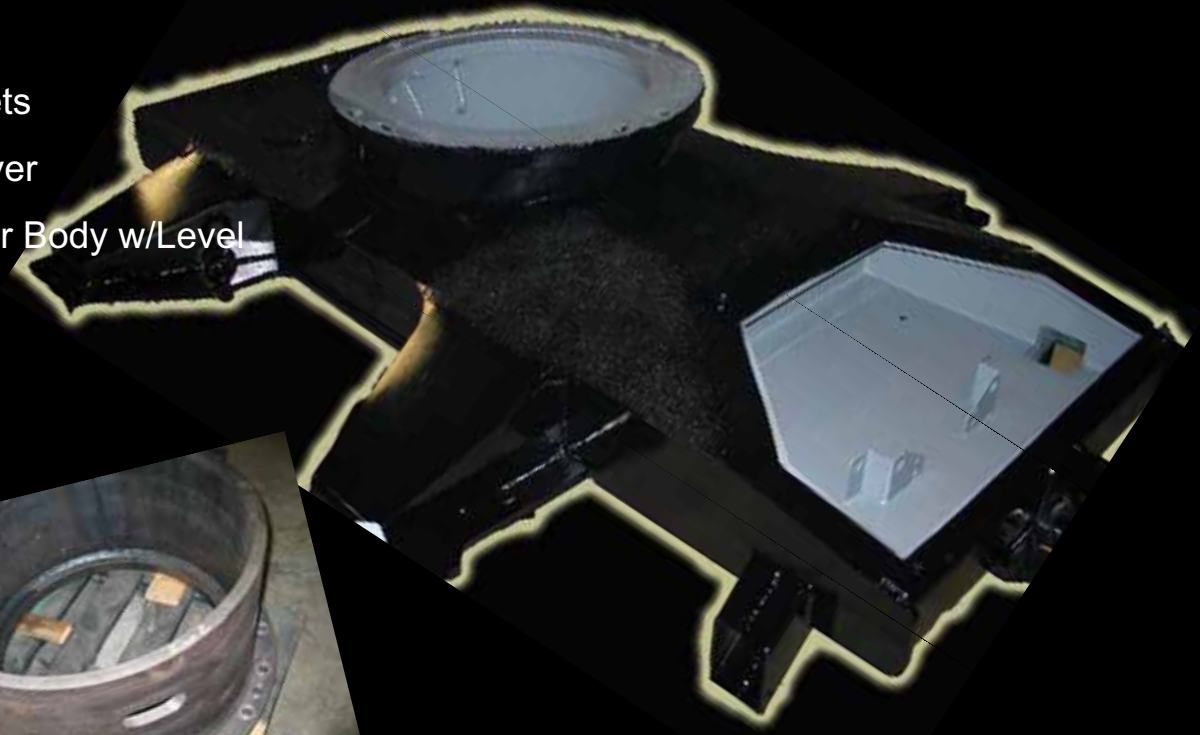
2" Bearing Mounted Ring

High Mounted Track Gussets

Large Manhole w/Pivot Cover

120 Gallon Fuel Tank is Car Body w/Level Switch

Burn Proof Fuel Tubes



*The Wheels Of Change...*

# Improved Feller Buncher Boom Option

More Lifting Capacity at Full Reach – 9,000 lbs @ 24'

Over 2 Foot Longer Reach (23'-9")

Stronger Boom Set - Larger Cross Section

Main Boom Counter Weight?  
True or False



*The Wheels Of Change...*

# Forest Debris Guarding

Removed Ladder

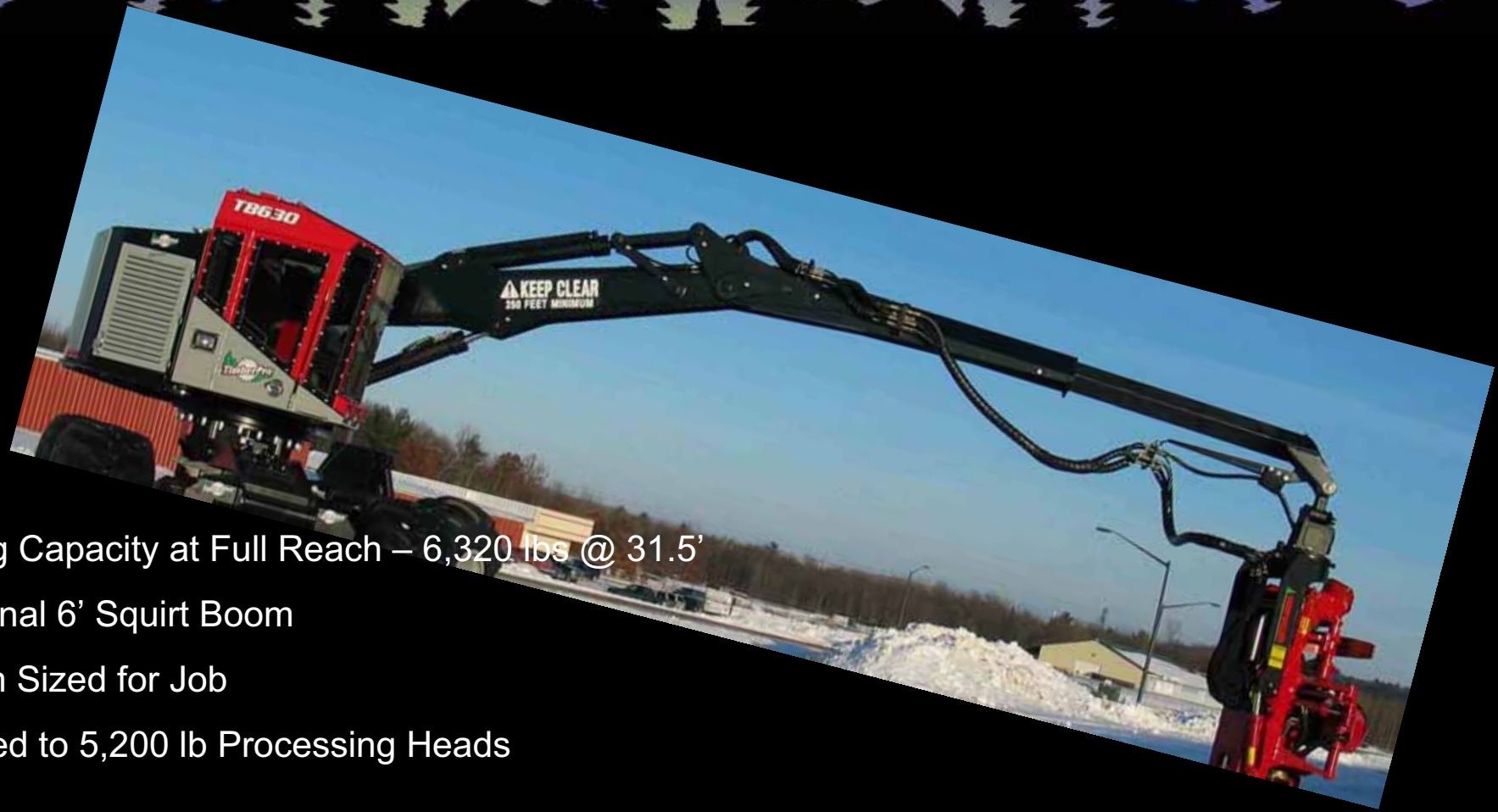
Added Rubber Guarding Down  
and Over Boom Hosing

Bubble Seal Along Cab and  
Front Door



*The Wheels Of Change...*

# Harvester Boom Option



Lifting Capacity at Full Reach – 6,320 lbs @ 31.5'

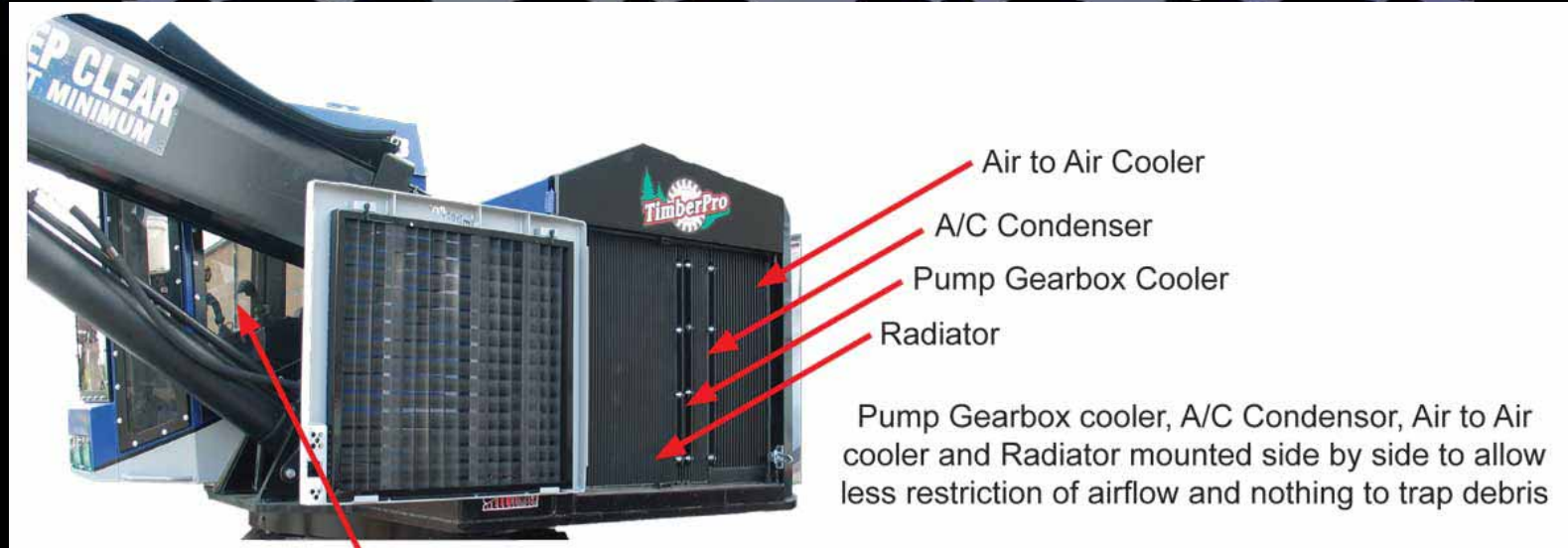
Optional 6' Squirt Boom

Boom Sized for Job

Limited to 5,200 lb Processing Heads

*The Wheels Of Change...*

# Improved Radiator Package



## Side by Side Unit: (Radiator, Charge Air Cooler, Freon Condenser and Gear Box Cooler)

Wider Fin Spacing (6 fins/Inch)

Turbulater Technology

Vane Motor (better efficiency / fan support)

Fan Speed Dependent on Cooling Needs

122 F Ambient Capability @ 90 % Load

Higher Capacity Freon Condenser

*The Wheels Of Change...*

# Improved Oil Cooler Package

## Large Capacity Oil Cooler

**Vane Motor Design Better Efficiency:** Fan Speed Based on Hydraulic Heat Reject Run Fans at Slower Speeds

No Need for Add On Coolers

Strong Core Design



*The Wheels Of Change...*



# MDL – Reduced Engine Speed

## Increased Gear Box Ratio

Wheeled Machine – (.647:1)

Track Machine - (.723:1)

1600 RPM Engine Speed / Track Machine  
1800 RPM

Reduced Noise

Better Fuel Economy (.358 lb/hp-hr –vs-  
.375 lbs/hp-hr)

Auto Throttle Management System



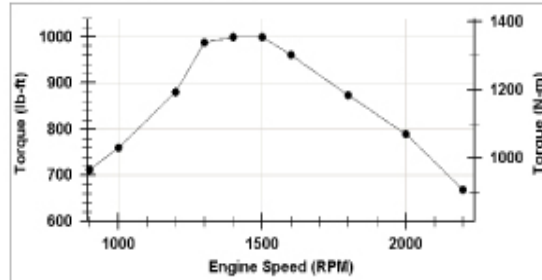
**Engine Performance Data**  
Cummins Inc  
Columbus, Indiana 47202-3005  
<http://www.cummins.com>

Industrial  
**QSC**  
FR91510

**280 BHP (209 kW) @ 2200 RPM**  
**1,000 lb-ft (1,356 N-m) @ 1500 RPM**

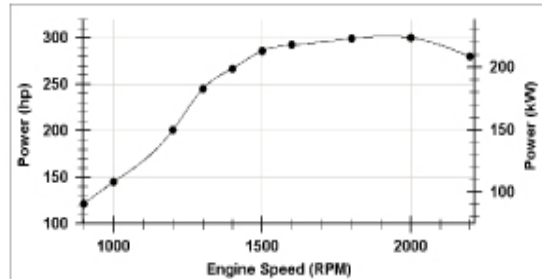
Configuration: D413055CX03  
CPL Code: 9527-SC03  
Revision: 8-May-2007

Rating Type: Intermittent



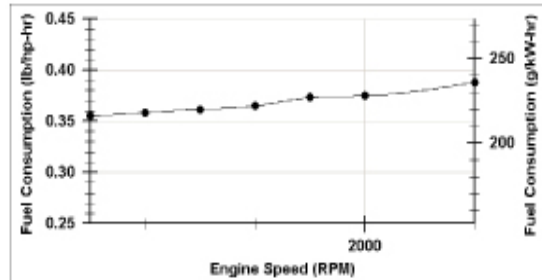
Torque Output

| RPM   | lb-ft | N-m   |
|-------|-------|-------|
| 900   | 712   | 965   |
| 1,000 | 760   | 1,030 |
| 1,200 | 880   | 1,193 |
| 1,300 | 988   | 1,340 |
| 1,400 | 1,000 | 1,356 |
| 1,500 | 1,000 | 1,356 |
| 1,600 | 960   | 1,302 |
| 1,800 | 873   | 1,184 |
| 2,000 | 789   | 1,070 |
| 2,200 | 668   | 906   |



Power Output

| RPM   | hp  | kW  |
|-------|-----|-----|
| 900   | 122 | 91  |
| 1,000 | 145 | 108 |
| 1,200 | 201 | 150 |
| 1,300 | 245 | 183 |
| 1,400 | 267 | 199 |
| 1,500 | 286 | 213 |
| 1,600 | 292 | 218 |
| 1,800 | 299 | 223 |
| 2,000 | 300 | 224 |
| 2,200 | 280 | 209 |



Fuel Consumption

| RPM   | lb/hp-hr | g/kW-hr |
|-------|----------|---------|
| 1,500 | 0.355    | 216     |
| 1,600 | 0.358    | 218     |
| 1,700 | 0.362    | 220     |
| 1,800 | 0.365    | 222     |
| 1,900 | 0.373    | 227     |
| 2,000 | 0.375    | 228     |
| 2,200 | 0.388    | 236     |

*The Wheels Of Change...*



# Easy Access Engine Filter/Fuel Filter

Remote Mounted Fuel Filter and Engine Filter off Front of Engine

Steel Transfer Tubes – Durability and Organization



*The Wheels Of Change...*

# Steel Tubing - Fan and Charge System

Clean-Up Hose Layout with Steel Tubing

Fire Wrap – Exhaust Manifold

Exhaust Pipe

Muffler



*The Wheels Of Change...*

# TimberPro Cab

Roof Mounted Escape

Exceptional Visibility to the Left

Easy Reach Controls

Radio is Equipped with iPod Input Jack

Optional XM Satellite Radio Receiver

12 Volt Input Jack

Lunch Box

Pressurized Cab with Air Filter



*The Wheels Of Change...*



# Increased Capacity – A/C and Heater

Rear Flow Fan – Better Air Flow to Duct Work

Higher Capacity Condenser and Evaporator

Heating – 45,000 BTU/Hr (+29%)

Cooling – 26,500 BTU/Hr (+18%)

Higher Air Flow Motors – 440 CFM (+10 %)

Filtered Outside Air Input

Infinitely Variable Fan Speed Control



*The Wheels Of Change...*

# Seat Options

Std: Seat Inc – Heated /  
Air Ride

Optional Amobi – Heated  
Air Ride w/Lumber  
Support

Optional KAB – Heated Air  
Ride w/Lumbar Support,  
Head Rest and Adjustable  
Arm Rest.



*The Wheels Of Change...*

# CAN Based Hand Control Pods

Back Light Switches

Programmable Switches

CAN Wires from Hand Control Pods

Diagnostic of Switch Inputs and Outputs

Adjustable Handle Height and Angle

Steer Joystick (2 or 4 axis control)



Optional Mini  
Levers



*The Wheels Of Change...*

# Next Generation Control System IQAN “MDL” Technology

Computer Screen Interface with Operator

Flexibility in Machine Programming

4 - Separate CANBUS Networks

Graphical Gauge Display

Diagnostic Groups (engine, booms,  
load center, wheel drive, handle pods  
ect..)

Multiple “States” of Operation

Quick Control Layout Change



*The Wheels Of Change...*

# MDL – Information Screen

On Board Pressure Transducer - Troubleshooting

Transducer can be moved to any location

Diagnostic Group Selection



*The Wheels Of Change...*



# MDL – Gauge Display

Custom Designed Dash

Icon Illuminates if Issue

Yellow Warning / Red Stop



*The Wheels Of Change...*



# MDL – Control System Layout

Custom Machine Layouts  
Easy Selection of Controls  
Create “States” of Control  
Operator Confirmation of  
Control Layout



*The Wheels Of Change...*



# MDL – Warning Screens

Three Levels of Warnings:

Warning (Yellow)

Error (Red)

Critical (Red Stop)



*The Wheels Of Change...*



# MDL – J1939 Communication with Engine

MDL Reads Engine Data

Gauges Display Engine Data

Error – Verbal Description

Cummins Error Code SPN and

FMI Numbers



*The Wheels Of Change...*



# CAN Based Load Center

## CAN Relays and Fuses

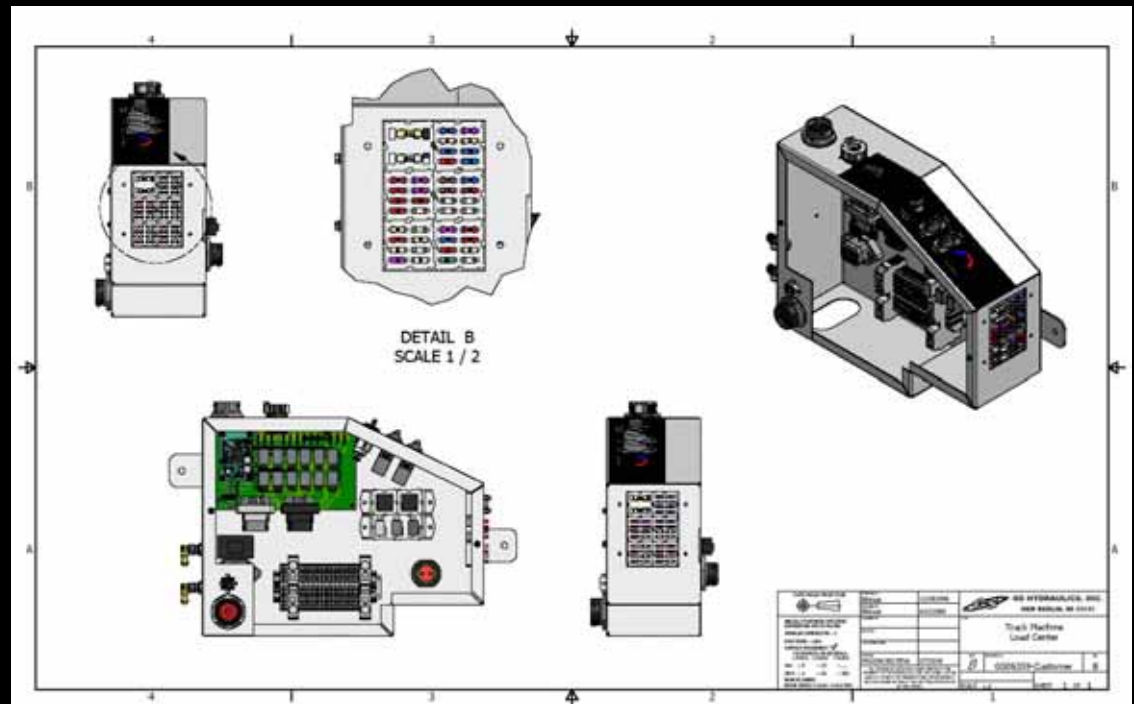
Monitor Relays (power, signal and output)

Monitor Fuses (power and output)

Ease Electrical Trouble Shooting

Systems Warnings -

CAN monitoring of Relays and Fuses



*The Wheels Of Change...*



# Standard and Optional Features

| <b>Engine</b>  | <b>725</b> | <b>735</b> |  |            |            |
|--|------------|------------|--|------------|------------|
| Cummins 8.3 – 300 HP                                 | S          | S          | 24" DG (600 mm)                        | S          | NA         |
| 24 volt electrical system w/ 100 amp                 | S          | S          | 24" SG (600 mm)                        | O          | S          |
| Auto reversing hyd controlled rad fan                | S          | S          | 28" SG (700 mm)                        | O          | O          |
| <b>Hydraulics</b>                                    | <b>725</b> | <b>735</b> | 36" TG (900 mm)                        | NA         | O          |
| Voac control valves & IQAN digital control system    | S          | S          | Auto track brakes                      | S          | S          |
| Auto reversing hyd controlled cooling fan.           | S          | S          | Variable track speed control           | S          | S          |
| 60 gallon hyd oil reservoir                          | S          | S          | L & S forestry final drives and motors | S          | S          |
| 10 micron return oil filter                          | S          | S          | <b>Operator's Cab</b>                  | <b>725</b> | <b>735</b> |
| 100 mesh suction filter w/magnet                     | S          | S          | Fully certified for ROPS/FOPS/OPS      | S          | S          |
| Close loop drive circuit (pump for each track drive) | S          | S          | ½" lexan in all windows                | S          | S          |
| Drive pump gear box cooler                           | S          | S          | 1½" lexan in front window              | O          | O          |
| Hyd tank vacuum pump                                 | S          | S          | Heater & AC system                     | S          | S          |
| Electric hyd oil fill pump                           | S          | S          | Air filtered & cab pressurized         | S          | S          |
| Hydrostatic charge relief heater                     | S          | S          | AM/FM - weatherband radio              | S          | S          |
| Continuous rotation – upper turntable                | S          | S          | XM satellite radio                     | O          | O          |
| <b>Boom Options</b>                                  | <b>725</b> | <b>735</b> | Seat - Air ride & heated               | S          | S          |
| Forward type boom w/25' reach                        | O          | O          | Deluxe Seat - with air, heat & lumbar  | O          | O          |
| 6' squirt for forwarder boom                         | O          | O          | Sliding rear window                    | S          | S          |
| <b>Carbody &amp; Track Options</b>                   | <b>725</b> | <b>735</b> | 2 escape routes (door & roof)          | S          | S          |
| Narrow carbody – 9'5" (2.86m)                        | S          | NA         | 5 halogen lights                       | S          | S          |
| 24" DG shoes / Short Track                           |            |            | 8 Xenon lights                         | O          | O          |
| Wide Carbody – 10' 4" (3.15m)                        | O          | S          | Automatic fire suppression             | O          | O          |
| 24" SG shoes / Long Track                            |            |            | Front window fan                       | S          | S          |
| Leveling w/Narrow body - 9'9" (3m)                   | O          | O          | Cup holder & lunch box w/ thermos      | S          | S          |
| 24" SG shoes   |            |            | Slope meter                            | S          | S          |
| Leveling w/Wide body - 10' 4" (3.15m)                | O          | S          | Metal tray for tools                   | S          | S          |
| 24" SG shoes / Long Track                            |            |            | 10 lb fire extinguisher                | S          | S          |
|  |            |            | 30 lb "water" fire extinguisher        | O          | O          |
|  |            |            | Rear mounted camera system             | O          | O          |
|  |            |            | Skylight windows                       | S          | S          |

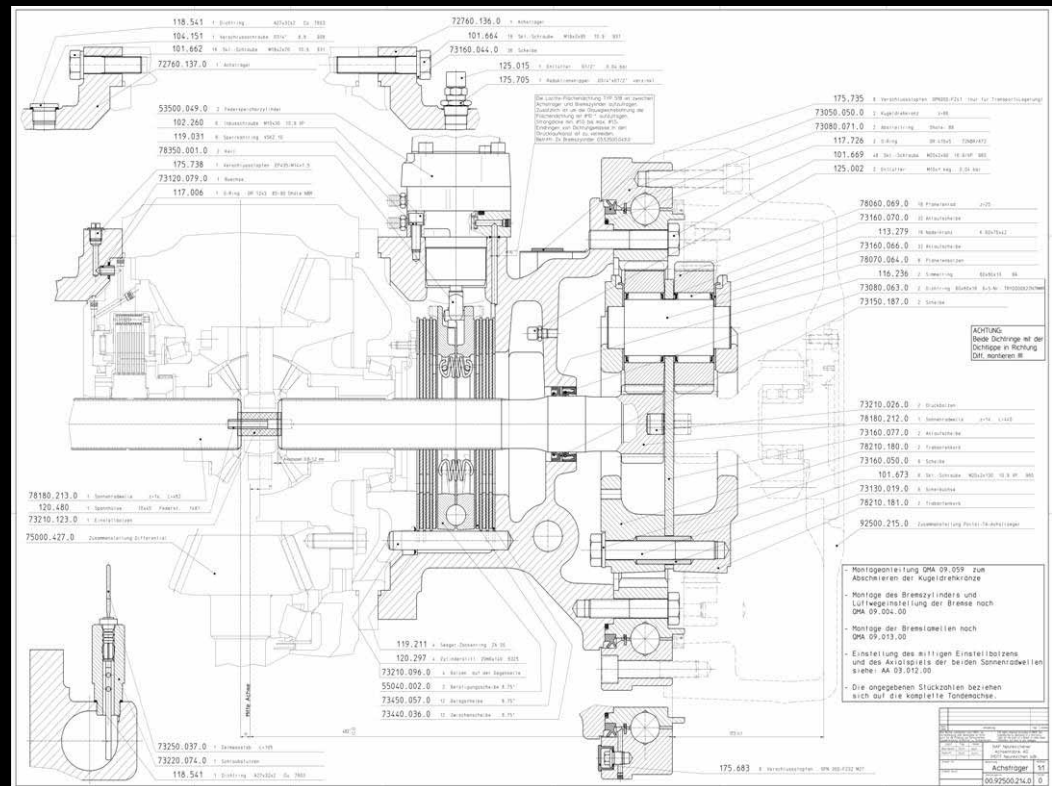
S = STANDARD - O = OPTIONAL - NA = NOT AVAILABLE

*The Wheels Of Change...*



# Balanced Bogie Axles

- Optional Balanced Bogies -
- Eliminates Bogie Tire Lift
- Reduced Stress Wheel Ends
- Reduced Tire Slippage
- Better Traction
- Run 30% Longer without Tracks



The Wheels Of Change...



# Reinforced Bearing Mounting Plate

Increase Bearing Plate Thickness – 2”  
Increase Height of Plate – More Weld  
Zero Clearance Articulation Bearing



*The Wheels Of Change...*

# Increase Radius – Front Frame Joint

Reduce Stress Concentration – Increased Radius  
Of Front Frame Side Plate



*The Wheels Of Change...*



# New Forestry Boom Option

4/Bar Live Heel Boom

Top Mounted Stick Boom



*The Wheels Of Change...*

