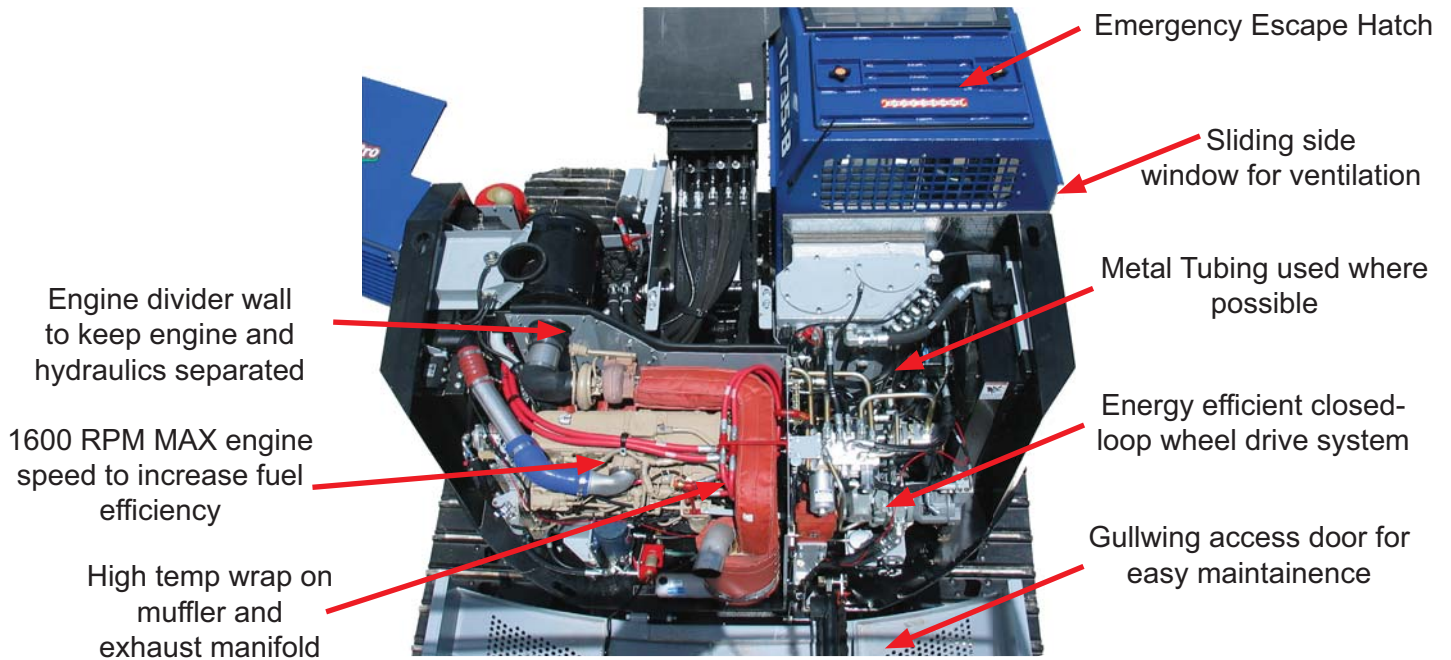




**810-B**  
**830-B**  
**840-B**



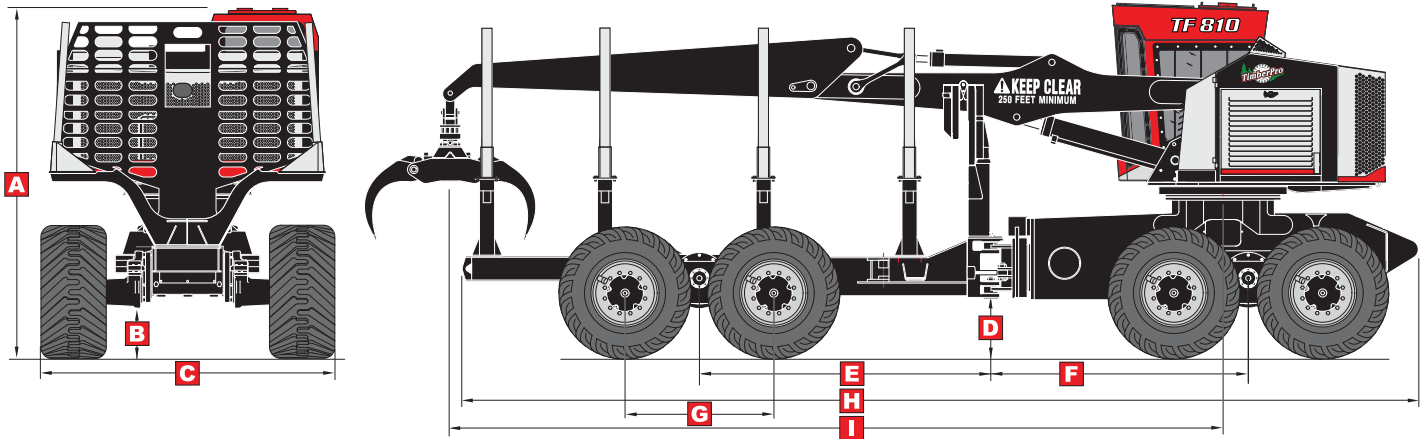


ENGINE	810	830	840
Cummins 8.3 – 300 HP	S	S	S
24 volt electrical system w/ 100 amp	S	S	S
Auto reversing hyd controlled rad fan	S	S	S
HYDRAULICS	810	830	840
Voac control valves & IQAN digital MDL control system	S	S	S
Auto reversing hyd controlled cooling fan.	S	S	S
60 gallon hyd oil reservoir	S	S	S
10 micron return oil filter	S	S	S
100 mesh suction filter w/magnet	S	S	S
Close loop drive circuit	S	S	S
Drive pump gear box cooler	S	S	S
Hyd tank vacuum pump	S	S	S
Electric hyd oil fill pump	S	S	S
Hydrostatic charge relief heater	S	S	S
Continuous rotation – upper turntable	S	S	S
OPTIONS	810	830	840
Forward type boom w/25' reach	S	S	S
6' squirt for forwarder boom	O	O	O
Quick change stick boom adapter	O	O	O
Feller buncher booms	NA	O	O
Forestry booms with Live heel	NA	O	O
Forwarder bunks and headache rack	O	O	O
Hultdins 360s grapple	O	O	O
Clam bunk	NA	O	O
Large Articulation Brake Disc	NA	O	O

S = STANDARD ~ O = OPTIONAL ~ NA = NOT AVAILABLE

TIRES	810	830	840
700 / 50	S	O	O
750 / 55	O	S	S
Firestone 28L (dual tires only)	NA	NA	O
AXLES & DRIVELINE	810	830	840
Axle Capacity in US Tons	15 T	20 T	22 T
Driveline - 8.5c with roller bearing joints	S	S	S
OPERATOR'S CAB	810	830	840
Fully certified for ROPS/FOPS/OPS	S	S	S
½" lexan in all windows	S	S	S
1½" lexan in front window	O	O	O
Heater & AC system	S	S	S
Air filtered & cab pressurized	S	S	S
AM/FM - weatherband radio	S	S	S
Sirius Satellite radio	O	O	O
Seat - Air ride & heated	S	S	S
Deluxe KAB Seat - with air, heat & lumbar	O	O	O
Sliding rear window	S	S	S
3 escape routes (door,window & roof)	S	S	S
Halogen lights	S	S	S
Xenon lights (HID)	O	O	O
Automatic fire suppression	O	O	O
Front window fan	S	S	S
Cup holder & lunch box w/ thermos	S	S	S
Slope meter	S	S	S
Metal tray for tools	S	S	S
10 lb fire extinguisher	S	S	S
30 lb "water" fire extinguisher	O	O	O
Rear mounted camera system	O	O	O
Skylight windows	S	S	S

# SPECIFICATIONS:



	Tire	810	830	840		810	830 \ 840
<b>A)</b>	700	139" (353cm)	141" (358cm)	141" (358cm)	<b>E)</b>	115" (292cm)	113.5" (288cm)
	750		144" (366cm)	144" (366cm)			
<b>B)</b>	700	19.5" (49.5cm)	19" (48cm)	19" (48cm)	<b>F)</b>	103" (262cm)	104" (264cm)
	750		21.6" (55cm)	21.6" (55cm)			
<b>C)</b>	700	106" (269cm)	116" (295cm)	119" (302cm)	<b>G)</b>	59" (150cm)	66.5" (169cm)
	750	Wheels Narrow	117" (297cm)	120" (305cm)			74.4" - 840
<b>C)</b>	700	117" (297cm)	127" (323cm)	130" (330cm)	<b>H)</b>	384" (975cm)	385" (978cm)
	750	Wheels Wide	128" (325cm)	131" (333cm)			
<b>D)</b>	700	24" (61cm)	24" (61cm)	24" (61cm)	<b>I)</b>	301" (765cm)	301" (765cm)
	750		27" (68cm)	27" (68cm)			

## BASE MACHINE WEIGHT (LBS)

	TOTAL	FRONT AXLE	REAR AXLE
810	48,620 (22,054 kg)	33,120 (7,384 kg)	15,500 (7,053 kg)
830	51,920 (23,550 kg)	35,640 (16,166 kg)	16,280 (7,384 kg)
840	52,920 (24,004 kg)	36,640 (16,620 kg)	17,280 (7,838 kg)

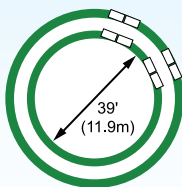
## LIFT CAPACITY - forwarder

31.5'	6,320 lbs (2,867 kg)
25.5'	7,540 lbs (3,420 kg)
20'	11,320 lbs (5,135 kg)
15'	12,880 lbs (5,842 kg)

## LIFT CAPACITY - feller buncher

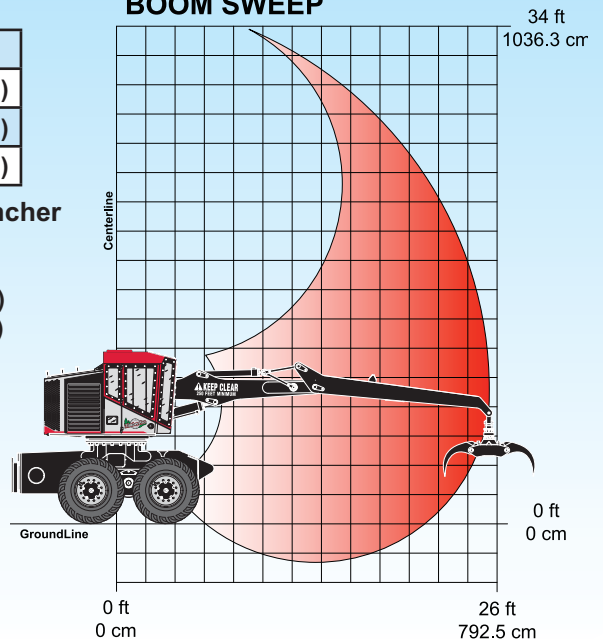
24'	10,800 lbs (4,899 kg)
20'	14,560 lbs (6,604 kg)
15'	22,200 lbs (10,070 kg)
10'	25,000 lbs (11,340 kg)

(Lift Capacities do not include attachment weight)



TimberPro's short wheelbase allows for a tight inside turning diameter of 39' (11.9m).

## BOOM SWEEP



TimberPro Inc reserves the right to change specifications without notice or obligation. Product illustrations may be equipped with non-standard equipment.

TimberPro Inc.  
1407 Industrial Dr.  
Po Box 415  
Shawano WI 54166 USA

Tel: 715-524-7899  
Fax: 715-524-7898  
E-Mail: info@timberpro.com  
www.timberpro.com



# Stability, Strength and Versatility

The TimberPro TF 830, TF 840 and TF 810 are the most versatile wheeled machines in the world today. The TimberPro line of machines come standard with 360° continuous rotation allowing the operator to always face his/her work. This feature also gives the operator the ability to remove timber from 360° around the machine. Including the option to work over the front of the machine just as well as the sides and rear. TimberPro machines have been proven effective in many other applications other than forwarding logs in the forest. Our machines can be used to move logs in mill yards, set mats in the pipeline industry, and most importantly as a combo machine equipped with a quick detach boom to allow conversion from a forwarder to a harvester in about 10 minutes.



**TimberPro TF 840**  
Forwarding eucalyptus in Australia.  
Shown with Optional Feller Buncher Booms, Live Heel, and Custom Trailer.



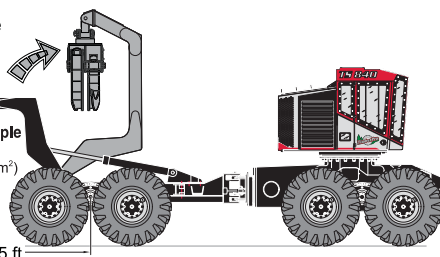
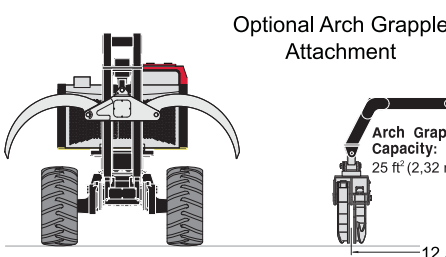
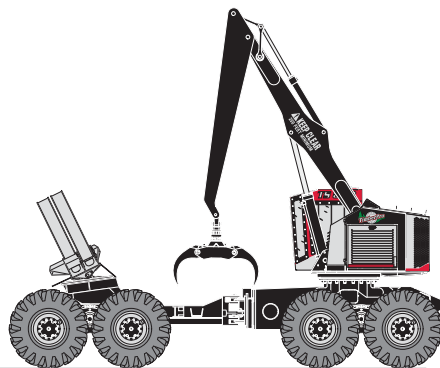
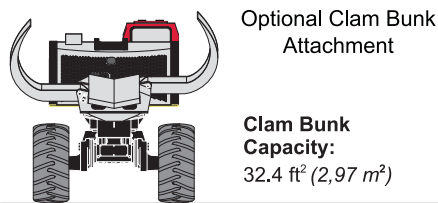
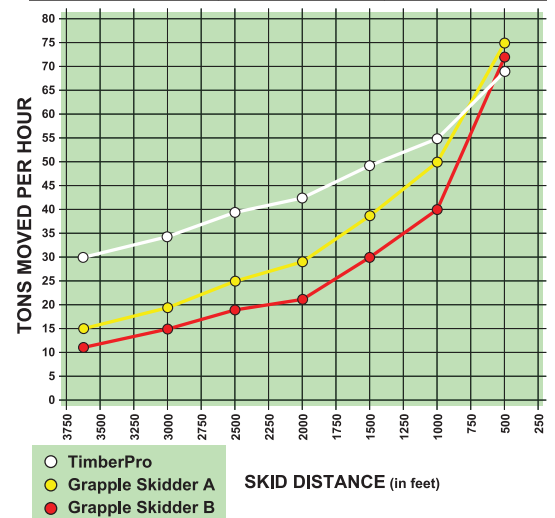
**TimberPro TF 840**  
Shown with Optional Feller Buncher Booms, Arch Grapple, and Custom Quick Change adapter to allow removal of disc saw and installation of grapple to reduce weight when skidding.

## OPTIONAL CONFIGURATIONS

Comparing TimberPro TF 840 Clam Bunk with Large Grapple Skidder

Travel time on 3600 ft. skid

	TF840	Grapple Skidder
Empty	9.0 min - 4.6 - M.P.H.	7.8 min - 5.3 - M.P.H.
Loaded	16.0 min - 2.6 - M.P.H.	10.5 min - 3.9 - M.P.H.
Loading and Turnaround	15.0 min	1.7 min
Total Round Trip Time	40 min	20 min
Average M.P.H.	3.6	4.6
Average Load	20 Tons	4 Tons





**New "Flat Top" Cab**  
 (More room, better visibility, three emergency escapes, more lights and now available with the new "optional" KAB seat)



TimberPro's front and rear axles track perfectly even in the tightest turns.

**- NEW -**  
**IQAN MDL Control System**  
 (energy saving features, easier adjustments, easier troubleshooting and CAN networking for reduced wiring)



Large comfortable cab with heated air-ride seat, reduced noise levels, Rops, Ops, and Fops certified

Extra large hydraulic oil cooler with auto-reversing fans

Large swing bearing w/continuous rotation

100 gallon fuel tank.

15 ton, 20 ton or 22 ton Bogie Axle, configured to allow front and rear axles to track perfectly even in the tightest turns

Air filtering system with pressurized cabin to reduce dust

Hinged head allows boom lowered for transport

Heavy duty steel cast frame articulation joint with caliper frame lock





Air to Air Cooler

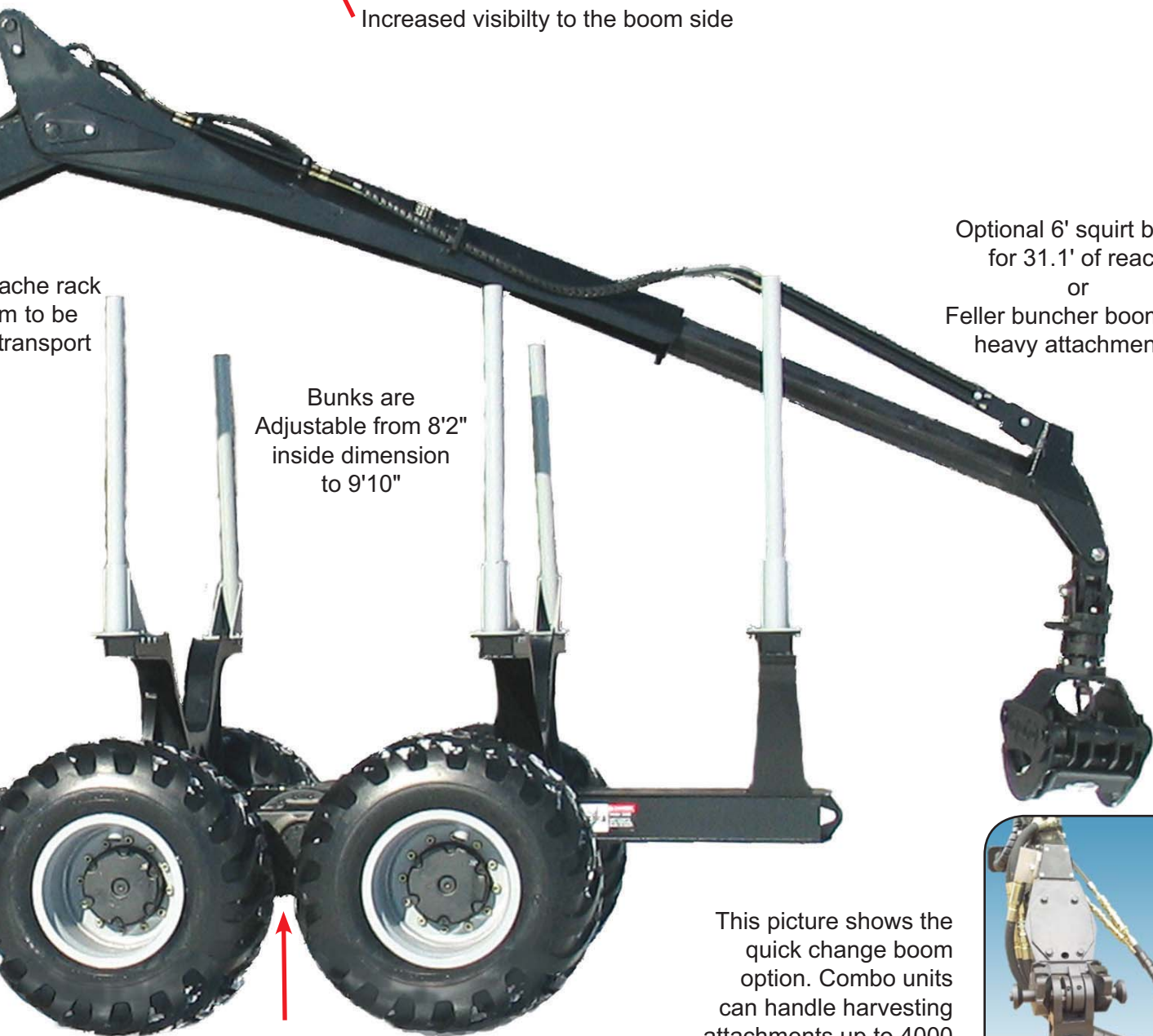
A/C Condenser

Pump Gearbox Cooler

Radiator

Pump Gearbox cooler, A/C Condenser, Air to Air cooler and Radiator mounted side by side to allow less restriction of airflow and nothing to trap debris

Increased visibility to the boom side



Attach rack  
m to be  
transport

Optional 6' squirt boom  
for 31.1' of reach  
or  
Feller buncher booms for  
heavy attachments.

Bunks are  
Adjustable from 8'2"  
inside dimension  
to 9'10"

15 ton, 20 ton or 22 ton Bogie  
Axle, configured to allow front  
and rear axles to track perfectly  
even in the tightest turns

This picture shows the  
quick change boom  
option. Combo units  
can handle harvesting  
attachments up to 4000  
lbs (1814 kg) and can  
change to a grapple in  
about 10 minutes.

