

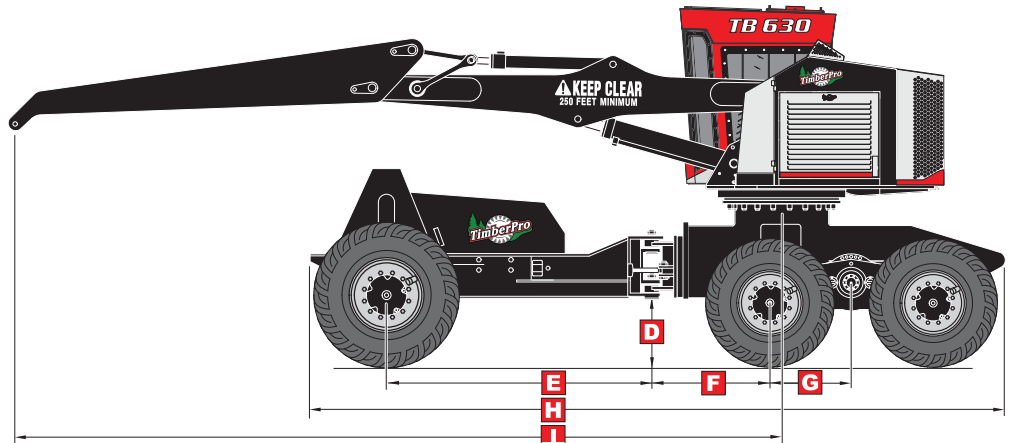
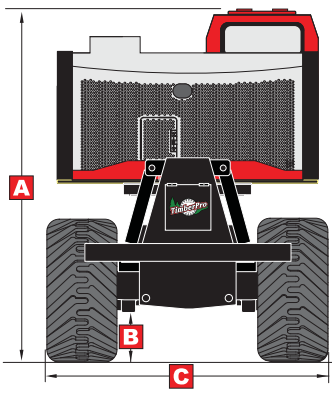


TB 630-B

TB 830-B



SPECIFICATIONS:



TB 630	Tire Options	630		630
A)	700/50 & 750/55 750/55 & 28L	141" (358cm) 144" (366cm)	E)	103" (292cm)
B)	700/50 & 750/55 750/55 & 28L	19" (48cm) 21.6" (55cm)	F)	49.8" (262cm)
C) narrow	700/50 & 750/55	117" (297cm)	G)	33.27" (85cm)
C) wide	700/50 & 750/55 750/55 & 28L	128" (325cm) 130" (330cm)	H)	291.5" (740cm)
D)	700/50 & 750/55 750/55 & 28L	24" (61cm) 27" (68.6cm)	I)	301" (765cm)

BASE MACHINE WEIGHT (LBS)

	TOTAL	FRONT AXLE	REAR AXLE
630	48,280 lbs (21,899 kg)	28,340 lbs (12,854 kg)	19,940 lbs (9,045 kg)
830	54,000 lbs (24,493 kg)	44,400 (20,139 kg)	9,600 (4,354 kg)

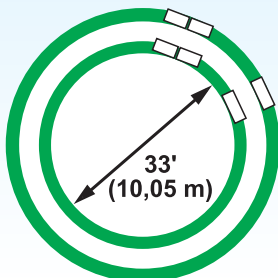
LIFT CAPACITY - feller buncher

(7.3 m) 24'	9,000 lbs (4,082 kg)
(6.1 m) 20'	13,300 lbs (6,033 kg)
(4.6 m) 15'	17,100 lbs (7,756 kg)
(3.0 m) 10'	24,700 lbs (11,102 kg)

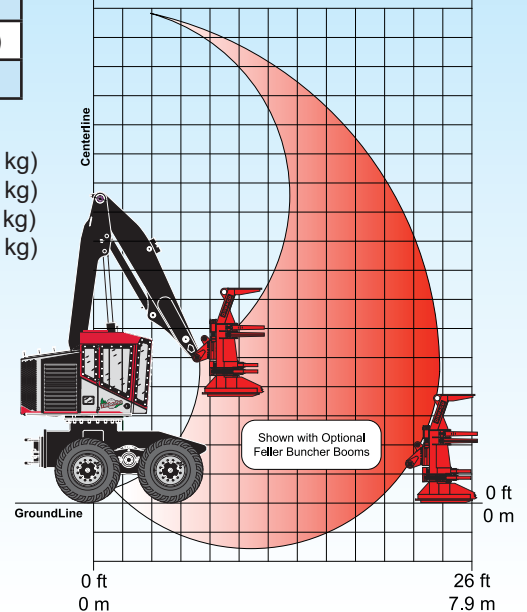
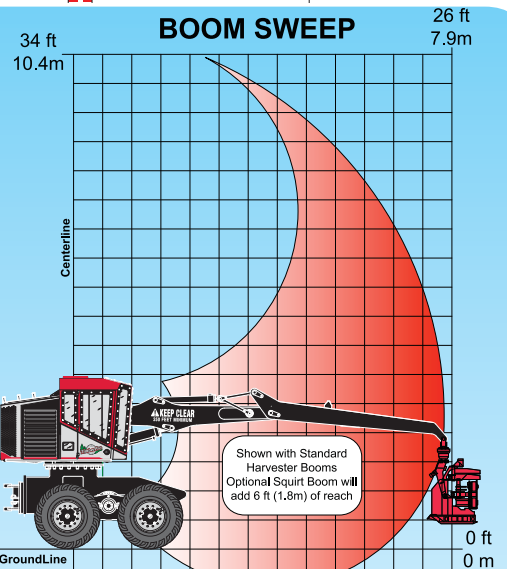
LIFT CAPACITY - harvester

(9.6 m) 31.5'	6,320 lbs (2,866 kg)
(7.8 m) 25.5'	7,540 lbs (3,420 kg)
(6.1 m) 20'	11,320 lbs (5,135 kg)
(4.6 m) 15'	12,880 lbs (5,842 kg)

(Lift Capacities do not include attachment weight)



TimberPro's short wheelbase allows for a tight inside turning diameter of 33' (10m).

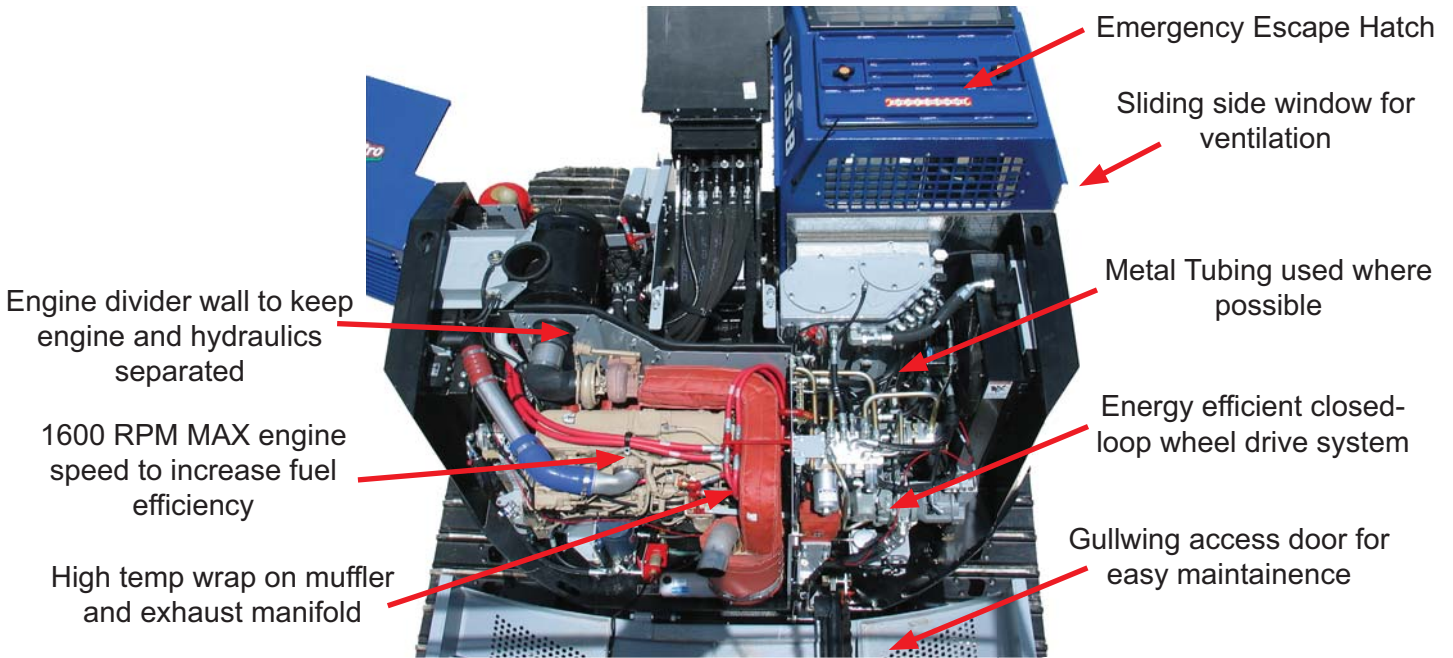


TimberPro Inc reserves the right to change specifications without notice or obligation. Product illustrations may be equipped with non-standard equipment.

TimberPro Inc.
1407 Industrial Dr.
Po Box 415
Shawano WI 54166 USA

Tel: 715-524-7899
Fax: 715-524-7898
E-Mail: info@timberpro.com
www.timberpro.com





ENGINE	830	630
Cummins 8.3 – 300 HP	S	S
24 volt electrical system w/ 100 amp	S	S
Auto reversing hyd controlled rad fan	S	S
HYDRAULICS	830	630
Voac control valves & IQAN digital MDL control system	S	S
Auto reversing hyd controlled cooling fan.	S	S
60 gallon hyd oil reservoir	S	S
10 micron return oil filter	S	S
100 mesh suction filter w/magnet	S	S
Close loop drive circuit	S	S
Drive pump gear box cooler	S	S
Hyd tank vacuum pump	S	S
Electric hyd oil fill pump	S	S
Hydrostatic charge relief heater	S	S
Continuous rotation – upper turntable	S	S
OPTIONS	830	630
Harvester booms w/25' (7,8m) reach	S	S
6' (1,8m) Squirt for Harvester boom	O	O
Quick change stick boom adapter	O	O
Feller buncher booms	O	O
Live Heel Attachment	O	O
2100 lbs (953kg) Counter Weight	NA	O
Fluid in Tires	O	O
Tool Box	NA	O

TIRES	830	630
700 / 50 front & 750 / 55 rear	NA	O
750 / 55 front & 28L rear	NA	S
750 / 55 front and rear	S	NA
AXLES & DRIVELINE	830	630
Axle Capacity - 20 US Tons	S	S
Driveline - 8.5c with roller bearing joints	S	S
OPERATOR'S CAB	830	630
Fully certified for ROPS/FOPS/OPS	S	S
½" lexan in all windows	S	S
1½" lexan in front window	O	O
Heater & AC system	S	S
Air filtered & cab pressurized	S	S
AM/FM - weatherband radio	S	S
Sirius satellite radio	O	O
Seat - Air ride & heated	S	S
Deluxe Seat - with air, heat & lumbar	O	O
Sliding rear window	S	S
3 escape routes (window,door & roof)	S	S
Halogen lights	S	S
Xenon lights (HID)	O	O
Automatic fire suppression	O	O
Front window fan	S	S
Cup holder & lunch box w/ thermos	S	S
Slope meter	S	S
Metal tray for tools	S	S
10 lb fire extinguisher	S	S
30 lb "water" fire extinguisher	O	O
Rear mounted camera system	O	O
Skylight windows	S	S

S = STANDARD ~ O = OPTIONAL ~ NA = NOT AVAILABLE

Stability, Strength and Versatility

The TimberPro TB 830 and TB 630 are the only wheeled machines in the world designed to handle larger cutting attachments like the Log Max 9000, Risley Rolly II and Quadco disc saws. The TimberPro line of wheeled harvester and feller bunchers are proven to increase production especially on rough terrain or when cutting scattered timber. The TimberPro line of machines come standard with 360° continuous rotation allowing the operator to always face his/her work. This feature also gives the operator the ability to harvest timber 360° around the machine. Including the option to work over the rear of the machine just as well as the front.

TimberPro TB 830
shown with 22° leveling, optional
squirt boom, track chains, and
LogMax 7000
(TB 830's only available with leveling front frame)



TimberPro TB 630
shown with optional feller
buncher booms, 22° leveling,
and Rolly II control fell
harvester attachment



Air to Air Cooler
 A/C Condenser
 Pump Gearbox Cooler
 Radiator

Pump Gearbox cooler, A/C Condenser, Air to Air cooler and Radiator mounted side by side to allow less restriction of airflow and nothing to trap debris

Increased visibility to the boom side

- NEW -

IQAN MDL Control System
 (energy saving features, easier adjustments, easier troubleshooting and CAN networking for reduced wiring)

Large comfortable cab with heated air-ride seat, reduced noise levels, Rops, Ops, and Fops certified

Extra large hydraulic oil cooler with auto-reversing fans

No tail swing & great visibility all around with engine behind the cab.



Large swing bearing w/continuous swing.

100 gallon fuel tank.

700-26.5 or Optional 750-26.5 front tires.

Heavy Duty Bogie Axle

Optional tool box

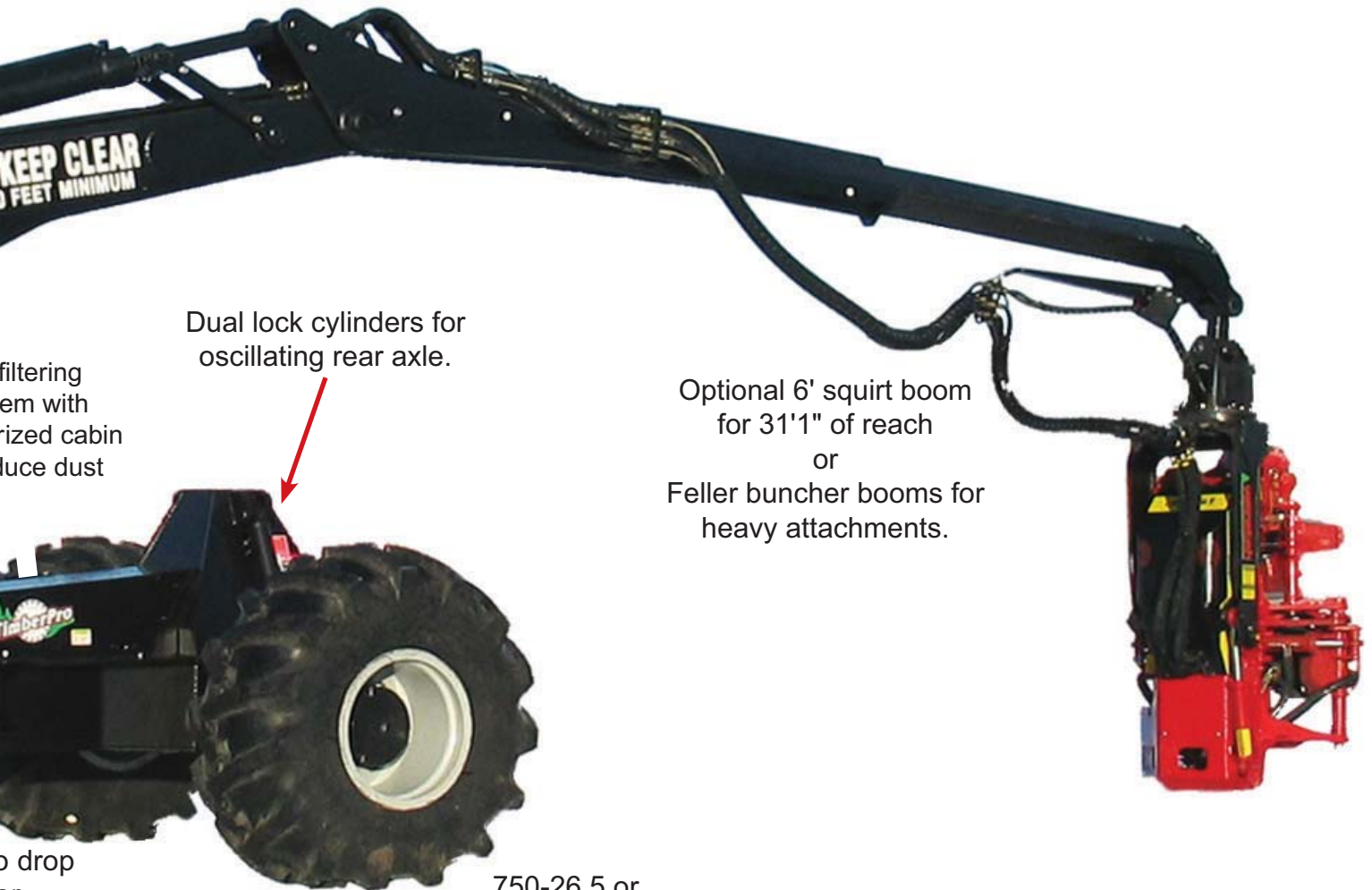
Hinged access to box and motor

Air system pressure to rec

m
ng



Increased access to all major components for service.



filtering
em with
rized cabin
duce dust

Dual lock cylinders for oscillating rear axle.

Optional 6' squirt boom for 31'1" of reach
or
Feller buncher booms for heavy attachments.

o drop
or.

750-26.5 or
Optional 28L-26.5
rear tires.